

2026 Official Guide



ROCK COUNTY



Rock County Tourism Council



Photo Credit: Kim Hoholek Photography

Rotary Botanical Gardens in Janesville, WI

3 - 6

8 - 9

14

15 - 20

21

Calendar of Events Parks Listing & Map Snowmobile Trails Map Community Pages Accommodations

VISIT US AT ROCKCOUNTY.ORG



WHISKEY RANCH

BAR AND GRILL

24 N Main St Janesville, WI

Where western charm meets modern comfort, and where traditional American favorites get a touch of southern flair

Janesville Gazette's **BEST OF THE BEST 2025** winner

Best Happy Hour

Best Bloody Mary

Best Chicken Wings

Best Bar

Best BBQ

Available on Uber Eats & Door Dash

TheWhiskeyRanch.com

(608) 563-1554

  Whiskey Ranch Janesville



MILTON KOA

872 E Hwy 59 Milton, WI 53563



- Playground
- Arcade
- Heated pool
- 7,500 sq. ft. Clubhouse
- RV and Tent camping sites
- 70' - 100' Drive thru sites with 50 amp power & sewer hookup
- Cabins available for rent



To reserve your spot today CALL 800-469-5515



www.HiddenValleyMilton.com



Old Junction Mill

613 W Madison Ave Milton, WI

OldJunctionMill.com

608-868-5555


Tues - Sat 10am - 5pm Sun 12pm - 4pm

Red Rooster



Home Furnishings & Gifts

Unique & affordable decor and gifts with something for everyone!

 Red Rooster

Peddlers

Loft & Cellar

40+ Vendors

Antiques, home decor, handmade & repurposed items, florals, & so much more!

 Peddlars Loft & Cellar

2026 Rock County Guide

Rock County offers something for everyone - welcome to Wisconsin's front porch!

Table of Contents:

Ongoing Events.....2-3
Calendar of Events.....3-6
Entertainment.....7
Rock County Parks.....8
Parks Map.....9
Trails Map.....10
Boat Launches & Water Access Points.....11
Rock County Recreation.....12
Fall For Rock County.....13
Winter Wonderland.....14

COMMUNITY PAGES

Orfordville, Clinton, Cooksville,
Town of Beloit.....15
Beloit.....16
Edgerton.....17
Evansville.....18
Janesville.....19
Milton.....20
Rock County Accommodations.....21



See the full interactive guide
online at rockcounty.org

If you're looking for a true downtown shopping & dining experience - look no further! Downtown Beloit offers it all. Start by selecting one of many coffee or brunch spots, including Blue Collar Coffee Co, Bagels and More, Bushel & Peck's, or Rise and Grind Coffee Haus. Then spend your day checking out the variety of retail stores, services, lunch spots, and more. Finally, finish the night with dinner and a drink and retire to a room at the Ironworks Hotel.



plan your trip today at downtownbeloit.com

DOWNTOWN BELOIT

All-America City Award Winner • Most Romantic Main Street Award Winner

2026 Ongoing Events

BELOIT

Sky Carp Baseball. April - September. High-A affiliate of the Miami Marlins. ABC Supply Stadium, 217 Shirland Ave. skycarp.com

Beckman Mill Guided Tours. May-October. Every Saturday & Sunday from 1-4pm. Group tours by reservation. 1160 County Highway H. beckmanmill.org.

Farmers' Market. May-October. Every Saturday from 8am-1pm, rain or shine. Second largest market in WI with more than 130 vendors. State St & Grand Ave in Downtown Beloit. downtownbeloit.com.

Fridays in the Park. May-September. Every Friday from 11:30am-1:30pm. Purchase lunch & enjoy live music in the Park in Downtown Beloit. downtownbeloit.com

Dancing at Harry's Place. June-August. Second and Fourth Monday evenings from 7-9pm. Enjoy free dance lessons on the riverfront. Harry Moore Pavilion, Riverside Park, Hwy 51. friendsofriverfront.com

Music at Harry's Place. June-August. Every Friday from 7-9pm, except 1st Friday of August. Free concert series and food trucks on the riverfront. Harry Moore Pavilion, Riverside Park, Hwy 51. friendsofriverfront.com

Beloit Winter Crafter & Farmers' Market. November-April. Every Saturday from 9am-12pm, indoors. Downtown Beloit Association. 557 E Grand Ave. downtownbeloit.com

EDGERTON

Sterling North Museum Tours. Every Sunday. May-October. Childhood home of the author of children's book and Disney film "Rascal". Sterling North Museum. 409 W Rollin St. (608) 561-3709, sterlingnorthsociety.com

Tired Iron Cruise Nights. Second Wednesdays, May-September. Classic cars and trucks, good food, and wonderful people. Albion Park. 612 Campus Ln.

Friday Night Skating. Fridays. Skate rental is included with admission and concessions are available. Tri-County Community Center. 112 Swift St. edgertonwichamber.com

MILTON

Live Music at Rubber Ducky Winery & Country Market. Fridays and Saturdays. 232 S Janesville St. (608) 580-0575. northleafwinery.com

Milton House Tours. June 7-August 29. 1844 Stagecoach Inn - part of the Underground Railroad. Milton House Museum, 18 S Janesville St. (608) 868-7772. miltonhouse.org

Concerts at the Gathering Green. Summer. The Gathering Place, 715 Campus St. tgpmilton.com

JANESVILLE

Library Art Exhibit. Ongoing. Hedberg Public Library. 316 S Main St. (608) 758-6600. hedbergpubliclibrary.org

Winter StoryWalk®. January 1 - March 20. Children's book laid out along the Jolyn Beeman Trail. Robert O. Cook Memorial Arboretum/JSOL. 3550 W Cty Hwy A. (608) 755-3030

Public Skate. Most Saturdays and Sundays. All ages & levels. Woodman's Sports & Convention Center. 2510 Milton Ave. woodmanscenter.com

Spring StoryWalk®. March 20 - June 20. Children's book laid out along the Jolyn Beeman Trail. Robert O. Cook Memorial Arboretum/JSOL. 3550 W Cty Hwy A. (608) 755-3030.

Lincoln-Tallman Museum Tours. May-October. Tour this beautiful Italianate-style home built in the 1850s. Rock County Historical Society. 440 N Jackson St. (608) 756-4509. rchs.us

Rock County Historical Society Museum and Visitor's Center. Rotating exhibits featuring stories and artifacts of Rock County Residents. Rock County Historical Society. 426 N Jackson St. (608) 756-4509. rchs.us

Janesville Farmers Market. Saturdays. May - October. Janesville Town Square. 21 Dodge St. (608) 289-9292. janesvillefarmersmarket.com

Garden Art Exhibit. Mid-May thru mid-September. Rotary Botanical Gardens. 1455 Palmer Dr. (608) 752-3885. rotarybotanicalgardens.org

Rock Aqua Jays Water Ski Show. Wednesdays & Sundays, Memorial Day weekend - Labor Day. National Champion team performs pyramids, ballet, etc. Traxler Park. 600 N Main St. rockaquajays.com

Music at the Marv. Tuesdays. June-August. Free concert series featuring local and regional acts in a variety of genres. Marvin W Roth Community Pavilion at Courthouse Park. 51 S Main St. (608) 755-3030. downtownjanesville.com

Summer StoryWalk®. June 21 - September 22. Children's book laid out along the Jolyn Beeman trail. Robert O. Cook Memorial Arboretum/JSOL. 3550 W Cty Hwy A, Janesville. (608) 755-3030.

Skelly's Sunflower Experience. Mid-July thru mid-August. Six acres of sunflowers, with viewing platforms and Prop Stops for cute photos. Skelly's Farm Market. 2713 S Hayner Rd. (608) 757-1200. skellysfarmmarket.com

Skelly's Corn Maze & Fall Festival. September 5 - October 31. Two corn mazes with GPS enabled map for your smartphone; many family-friendly activities plus retail store and bakery. Skelly's Farm Market. 2713 S Hayner Rd. Janesville. (608) 757-1200. skellysfarmmarket.com

Janesville Jets Hockey. Select weekends September - April. Woodman's Sports & Convention Center. Mercy Health Arena. 2510 Milton Ave. (608) 752-5387. janesvillejets.com

Forest of Freaks. Weekends in October. The Edge Paintball & Airsoft. 5946 US-51, Janesville. wescaredyou.com

Holiday Art Show & Sale. Mid-November - Early January. Janesville Performing Arts Center. 408 S Main St. janesvilleartleague.org

Holiday Light Show. November 27 - December 30. 4:30-8:30. Stroll through a winter wonderland of over 2 million twinkling lights in this fun family activity. Rotary Botanical Gardens, 1455 Palmer Dr. (608) 752-3885. rotarybotanicalgardens.org



Bundle up and take the whole family to Rotary Botanical Gardens for their annual Holiday Light Show. Hot cocoa & cookies available for purchase at The Comfort Station inside the show!

Striegel Light Show. December. Home decorated with 20,000 lights synchronized to music on 90.9FM. Striegel Home. 3767 Stone Ridge Dr. facebook.com/striegelights

Comedy Cabin. Year round live comedians. 120 N Crosby Ave Suite 4. cabinlaughs.com

Holiday Tree Show. December. More than 100 trees and decorations throughout the Lincoln-Tallman House, each beautifully adorned. Rock County Historical Society. 440 N Jackson St. (608) 756-4509. rchs.us

Winter Farmers Market. 1st Saturdays November - April. 9am-2pm. Uptown Janesville (Janesville Mall). 2500 Milton Ave. (608) 289-9292. janesvillefarmersmarket.com

EVANSVILLE

Allen Creek CoffeeHouse Farmers' Market. Sundays. June–September. 10am–2pm. Enjoy local food, crafts, and other handmade goods at Allen Creek CoffeeHouse. 137 E Main St. (608) 882-1248. facebook.com/allencreekcoffeehouse

Creekside Cruise Night. First Thursdays. May–September. 5–8pm. Show off your ride with pride! Drinks and food vendors on site. Creekside Place. 102 Maple St. (608) 882-0407. facebook.com/creeksidecruise, creeksideplace.org

Creekside Place Art Exhibits. Call ahead for hours. Creekside Place Gallery. 102 Maple St. (608) 882-0407. info@creeksideplace.org, creeksideplace.org

Creekside Food Truck Nights. Second Tuesdays. May–August. 5–8pm. Creekside Place. 102 Maple St. (608) 882-0407. info@creeksideplace.org, creeksideplace.org

Eager Economy Building Micro-Museum. (Lower level) offers a glimpse of Evansville's agriculture history. The historic building is home to two towering examples of restored Baker-Monitor windmills. 7 E Main St.

Evansville Underground Music (EUM). A volunteer (non-profit) all ages DIY music collective that hosts year round community concerts on front porches, backyards, indoor venues, and other places of interest. evansvilleundergroundmusic.org

Evansville Jays Home Talent Baseball Games. May–August. Games typically at 7:30pm Thursdays and 1pm Sundays. Home games at Jay's Nest in Leonard Leota Park Upper Baseball Diamond. facebook.com/evansvillejays

Genealogy Group. Sponsored by the Evansville Grove Society meets on the third Thursday of each month at Creekside Place, 102 Maple Street, Evansville, WI year round. We welcome new members who are beginning, intermediate or accomplished researchers. Bring your questions, suggestions and answers to the meeting. For further information on the group, email grovesociety1@gmail.com.

Grove Society Local History Museum. Open 1–4pm on Saturdays. June–September. Exhibits feature Evansville history, housed in the historic Baker Manufacturing Office Building. 15 Antes Dr. On the museum grounds is the last tourist cabin from Lake Leota Park, restored to its 1936 appearance. For details: facebook.com/evansvillegrovesociety, grovesociety.org

Historic District Walking Tour. Four historic districts include the second oldest nationally designated district in the state. Self-guided walking tours. Follow maps in the free Walker's Guide tour book. Copies are available at Creekside Place, City Hall, Chamber, Eager Free Public Library, and the local History Museum.

Residential Barn Quilt Tour. 80-plus Barn Quilts, the highest concentration of residential and community Barn Quilts in Rock County. Free brochure and map available at Creekside Place, Chamber, City Hall, and Eager Free Public Library. A link to an online version is at ci.evansville.wi.gov/experience-evansville/

Rock County Historical Society

440 N. Jackson St. Janesville, WI 53548

The Rock County Historical Society's campus is anchored by the historic Lincoln-Tallman House, the residence of the William Tallman family from 1857 to 1915. Visitors are able to tour the house for a glimpse at life in the 19th century. A Help Wanted Tour is available that offers a glimpse at servant life during this time. The Society's annual Christmas Tree tour is also a widely known attraction, and features over 150 Christmas Trees decorated by area businesses and organizations. This site is also available for rent and offers educational programs.



Lincoln-Tallman House

rchs.us miltonhouse.org rchs.us/sites/lincoln-tallman-house/ evansvillewi.gov/experience-evansville

2026 Calendar of Events

January

2, 16-17 Beloit College Buccaneers Men's Hockey.

Woodman's Sports & Convention Centreeathletics.com
2510 Milton, Ave, Janesville. (608) 752-5387.
beloitcollegeathletics.com

3, 23-24 Beloit College Buccaneers Women's Hockey.

Woodman's Sports & Convention Centreeathletics.com
2510 Milton, Ave, Janesville. (608) 752-5387.
beloitcollegeathletics.com

3, 23-24 Janesville Jets Hockey Janesville Ice Arena,
821 Beloit Ave (608) 752-5387, janesvillejets.com

3 Candlelight Hike at Storrs Lake Wildlife Area. 6-8pm.
Hosted by Ice Age Trail Alliance / Rock County Chapter.
E Storrs Lake Rd, Milton. iceagetrail.org

3 Wood Carving Demo. Hedberg Public Library. 316 S Main
St, Janesville. (608) 758-6585. hedbergpubliclibrary.org

9-10 The American Cornhole (ACO) Beloit Major.
Over 100 cornhole players will compete at the Eclipse
Event Center, Beloit.

Event dates, times, and details subject to change. Please visit websites or socials for the most up to date information.

9 Candlelight Hike. JSOL. 6-8pm. Hosted by Janesville School District & Ice Age Trail Alliance. 3570 County Rd A, Janesville. iceagetrail.org

9 Dueling Pianos with Piano Fondue Janesville Performing Arts Center,
408 S Main St, Janesville. (608) 758-0297. janesvillepac.org

10 Winter Farmers Market. Vendors and crafters, Uptown Janesville
Mall. 2500 Milton Ave, Janesville. (608) 434-2709

10 Steadily Improv'ing. Janesville Performing Arts Center, 408 S
Main St, Janesville. janesvillepac.org

10 RC Swap Meet. Rock County Fairgrounds.
1301 Craig Ave, Janesville. (608) 362-0655. rrams.net

13 Rock County Arts Hall of Fame. Janesville Performing Arts Center.
408 S Main St, Janesville. (608) 758-0297. janesvillepac.org

16 Comedy on Main Janesville Performing Arts Center, 408 S
Main St, (608) 758-0297. janesvillepac.org

17 Murder at the Moose Mystery Dinner. Janesville Moose
Lodge. 418 W Milwaukee St. (608) 751-0809

19-24 Downtown Janesville Restaurant Week. Throughout
Downtown. janesvilleresaurantweek.com

22 Go Gold Dinner and Fundraiser. Supporting the Isaac Strong
Foundation. Janesville Country Club. 2615 W Memorial Dr,
Janesville. isaacstrongfoundation.com

23-25, 30-1 Sister Act - The Musical. Janesville Performing
Arts Center. 408 S Main St, Janesville. (608) 758-0297.
janesvillepac.org

23-25 Beloit Winterfest. Indoor & outdoor festivities.
beloitrecreation.com/beloit-winterfest

26 Hedberg Harmony: Rock River String Band. Hedberg Public
Library. 316 S Main St, Janesville, (608) 758-6600.
hedbergpubliclibrary.org

30-31 Evansville Jays 20th Annual Strike Out for Baseball
Bowling Fundraiser. Blue Devil Bowl. 108 E Main St, Evansville.
(608) 575-4359. facebook.com/evansvillejays

31 Candlelight Hike at Androne Woods. 6-8pm.
Hosted by Green-Rock Audubon Society.
7101 W Cleophas Rd, Beloit. greenrockaudubon.org

2026 Calendar of Events

Event dates, times, and details subject to change. Please visit websites or socials for the most up to date information.

February

TBD 8th Annual 8 Pin Bowling Tap Tournament. Chamber event open to everyone. Blue Devil Bowl. 108 E Main St, Evansville. (608) 882-5131. facebook.com/evansvilleccoc

3 An Evening of Music and Discovery. Celebrating the beauty, history, and playfulness of music. Janesville Performing Arts Center. 408 S Main St, Janesville. (608) 758-0297. janesvillepac.org

6-7, 13-14 Beloit College Buccaneers. Men's Hockey. Woodman's Sports & Convention Center. 2510 Milton Ave, Janesville. (608) 752-5387. beloitcollegeathletics.com

7 Are You Ready For It: A Taylor Experience. Taylor Swift tribute, starring Traci Marie, Edgerton Performing Arts Center, 200 Elm High Dr, (608) 561-6093, edgertonpac.com

7 Candlelight Hike. Hosted by Friends of Rockport Park. 6-8pm at Rockport Park 2801 Rockport Rd, Janesville.

7 Winter Farmers Market. Vendors and crafters, Uptown Janesville Mall. 2500 Milton Ave, Janesville. (608) 434-2709

12 Galentine's Day. Rotary Botanical Gardens. 1455 Palmer Dr, Janesville. (608) 752-3885. rotarybotanicalgardens.org

13-14, 19 Janesville Jets Hockey. Janesville Ice Arena, 821 Beloit Ave, Janesville. (608) 752-5387. janesvillejets.com

14 Janesville Stamp Club Exhibition & Bourse. Holiday Inn Express. 3100 Wellington Pl, Janesville. (608) 756-9661. wfscstamps.org

14 Galentine's Bingo. Shop participating Milton Area Chamber of Commerce member businesses, and enter to win a special Galentine's Day Milton Basket. (608) 868-6222. visitmilton.com

14 Candlelight: Valentine's Day Special. Live music under the gentle glow of candlelight. The Venue. 37 S Water St, Janesville. (608) 373-9727. thevenuejanesville.com

14 Hedberg Harmony: Southern WI Dulcimer Club. Hedberg Public Library. 316 S Main St, Janesville. (608) 758-6600. hedbergpubliclibrary.org

21 Chocolate Extravaganza. 6pm. Admission fee. Creekside Place. 102 Maple St, Evansville. creeksideplace.org

21 Candlelight Hike at Carver-Roehl County Park. 6-8pm. Hosted by Friends of Rock County Parks & Friends of Carver-Roehl Park. 4907 S Carvers Rock Rd, Clinton. facebook.com/friendsofrockcountyparks

21 JWA's Super Pro Wrestling. Janesville Wrestling Alliance. Holiday Inn Express. 3100 Wellington Place, Janesville. (608) 290-4071. jwatoday.com

21 Maple Sugar Fest. 10am-2pm. Welty Environmental Center. 1201 Big Hill Ct, Beloit. weltycenter.org

22 Local Dance Showcase: Life Dance Academy 2026. Janesville Performing Arts Center. 408 S Main St, Janesville. (608) 758-0297. janesvillepac.org

22 Local Dance Showcase: Veracity Dance Project 2026. Janesville Performing Arts Center. 408 S Main St, Janesville. (608) 758-0297. janesvillepac.org

23 Hedberg Harmony: Rock River String Band. Hedberg Public Library. 316 S Main St, Janesville. (608) 758-6600. hedbergpubliclibrary.org

28 Tim the Dairy Farmer Stand Up Comedy. Janesville Performing Arts Center. 408 S Main St, Janesville. (608) 758-0297. janesvillepac.org

28 Young Performers Concert. Janesville Woman's Club Association. 108 S Jackson St, Janesville. macdowellmusicclub.com

28 Flannelfest. Craft Beer Experience. Sample 100+ beer varieties from craft and home brewers. Janesville Town Square. 15 Dodge St, Janesville (608) 728-3322. janesvilleflannelfest.com

28 Candlelight Hike at Rock River Heritage Park. 6-8pm. Hosted by Friends of Rock River Heritage Park. 5801 N River Rd, Janesville. facebook.com/rhpfriendsgroup

March

1 34th Annual FFA Farm Toy Show. 9am-2pm. Car, truck and farm displays, tractors, and more. Evansville School District Field House. 320 Fair St, Evansville. facebook.com/evansville.wi.ffa.alumni

1, 5-8, 12-15, 19-22, 26-29 Hemlines and Heroes Exhibit. Historical clothing from flappers to post-WWII, and items of our military, medical, police and fireman in the years 1920-1950. Lincoln-Tallman Museum. 440 N Jackson St, Janesville. (608) 756-4509. rchs.us

6-7 Vintage Shop Hop Vintage. Handmade, and repurposed treasures at Evansville Main St proprietors. facebook.com/vintageshophop

7 Winter Games. 1-4pm. Free. Compete in our silly, annual winter games, including brat toss, beer stein holding, bags and more! Hop Garden, 18 E Main St, Evansville. (608) 882-1283. thehopgarden.net/evansville-taproom

7 Spring Craft Fair & Vendor Market. 9am-3pm. Clinton Jr/Sr High School. 112 Milwaukee St, Clinton. clintonwi.myrec.com/info/activities/

7 Winter Farmers Market. Uptown Janesville Mall. 2500 Milton Ave, Janesville. (608) 289-9292. janesvillefarmersmarket.com

14 Shamrock Shuffle Run/Walk. O'Riley & Conway's Irish Pub. 214 W Milwaukee St, Janesville. (608) 755-0575. bgcjanesville.org

14 Spring Fling Vendor Expo. Holiday Inn Express. 3100 Wellington Pl, Janesville. eventsbystacyllc.com

14 Casino Night. A new and exciting fundraiser for Creekside Place! Details TBD. Creekside Place. 102 Maple St, Evansville. (608) 882-0407. creeksideplace.org

20 Steadily Improv'ing. Unscripted comedy show with over-the-top, anything-goes hilarity, Janesville Performing Arts Center. 408 S Main St. (608) 758-0297. janesvillepac.org

20-29 Beloit International Film Festival (BIFF). Downtown venues. Times vary. (608) 313-1200. beloitfilmfest.org

21 Supertramp Tribute Band. Janesville Performing Arts Center. 408 S Main St, Janesville. (608) 758-0297. janesvillepac.org

27-29 Badger Knife Show. Over 172 tables of dealers and collectors. Holiday Inn Express and Janesville Conference Center. 3100 Wellington Place, Janesville. (414) 479-9765. badgerknifeclub.com

27 Comedy on Main. Janesville Performing Arts Center. 408 S Main St, Janesville. (608) 758-0297. janesvillepac.org

27-28 Janesville Jets Hockey. Woodman's Sports & Convention Center. 2510 Milton Ave, Janesville. (608) 752-5387. janesvillejets.com

28-29 Rock, Gem & Mineral Show. Kid's activities, speakers, demonstrators, vendors in rocks, minerals, jewelry & fossils, fluorescent display. Rock County Fairgrounds. 1301 Craig Ave, Janesville. (608) 935-0597. badgerrockclub.org

April

1 Story & Stroll in the Gardens. Rotary Botanical Gardens. 1455 Palmer Dr, Janesville. (608) 314-8415. rotarybotanicalgardens.org

3-4, 10-11 Janesville Jets Hockey. Woodman's Sports & Convention Center. 2510 Milton Ave, Janesville. (608) 752-5387. janesvillejets.com

4 Downtown Easter Eggstravaganza at Beloit Farmers' Market. 557 E Grand Ave, Beloit. downtownbeloit.com

4 Easter Egg Scramble. Schilberg Park. 301 W High St, Milton. (608) 868-6222

4 Winter Farmers Market. Uptown Janesville Mall. 2500 Milton Ave, Janesville. (608) 289-9292. janesvillefarmersmarket.com

10-12, 16-18 The Fantasticks. UW - Rock County Kirk Denmark Theatre. 2909 Kellogg Ave, Janesville. theatreunlimitedinc.org

11-12 Swamped! Musical presented by JPAC Kids, Janesville Performing Arts Center, 408 S Main St, Janesville. (608) 758-0297. janesvillepac.org

12 MacDowell Scholarship Winners Recital. Janesville Woman's Club. 108 S Jackson St, Janesville. macdowellmusicclub.com

17-18 Southern Wisconsin Dulcimer Festival. First Lutheran Church. 612 N Randall Ave, Janesville. southernwisconsinulcimerclub.com

17-19 Evansville High School Musical. Admission fee. High School Performing Arts Center. 640 S Fifth St, Evansville. www.sites.google.com/ecsdnet.org/evansvillehsdrama/musical.

18 Pianist Karen Kucharz. Cellist Lori Meyer and Friends. Janesville Woman's Club Association. 108 S Jackson St, Janesville. macdowellmusicclub.com

18 Pianomania! Edgerton Performing Arts Center. 200 Elm High Dr, Edgerton. (608) 561-6093. edgertonpac.com

18 Spring Wine Walk. 2-6pm. Sip, stroll, shop in downtown Beloit. downtownbeloit.com

19 Beloit Janesville Symphony Concert. Blackhawk Technical College. 6004 S County Hwy G, Janesville. (608) 757-7773. beloitjanesvillesymphony.org

19 Choral Union: An American Portrait Concert. Cargill United Methodist Church. 2000 Wesley Ave, Janesville. (608) 359-3872. janesvillechoralunion.org

25 FPI08SJ Super Fundraiser & Fashion Show. Janesville Country Club. 2615 W Memorial Dr, Janesville. (608) 754-4544. Janesvillewomansclub.com

2026 Calendar of Events

Event dates, times, and details subject to change. Please visit websites or socials for the most up to date information.

20-26 Community Weeding Week & Garden Party. Rotary Botanical Gardens. 1455 Palmer Dr, Janesville. (608) 752-3885. rotarybotanicalgardens.org

26 Earth Day Celebration. Live animals, food trucks, exhibitors, and family activities. Rotary Botanical Gardens. 1455 Palmer Dr, Janesville. (608) 752-3885. rotarybotanicalgardens.org

26 Run the Rock Marathon. Half-Marathon & 5K. Downtown Janesville - BHCCU Festival Street. 69 S River St, Janesville.

26 CROP Hunger Walk. Cargill United Methodist Church. 2000 Wesley Ave, Janesville. (608) 752-8117. crophungerwalk.org

May

2 Rummage Sale Days. village wide - Orfordville, WI. orfordvillewi.gov

2 Michael Cavanaugh - The Music of Billy Joel & Elton John. Edgerton Performing Arts Center. 200 Elm High Dr, Edgerton. (608) 561-6093. edgertonpac.com

2 Beckman Mill County Park Opening Day Celebration. 12-4pm. Friends of Beckman Mill. beckmanmill.org

6 Story & Stroll in the Gardens. Rotary Botanical Gardens. 1455 Palmer Dr, Janesville. (608) 314-8415. rotarybotanicalgardens.org

8 Art Crawl. 5-8pm. Evansville Main Street shops host up to 30 artists. facebook.com/evansvilleartcrawl

8 MacDowell Talent Showcase. Knapton Musik Knotes. 2475 Milton Ave, Janesville. (608) 758-8660. macdowellmusicclub.com

9 Market Day. 9am -1pm at 304 East Beloit St, Orfordville. facebook.com/orfordvillemarketdays

10 Sounds of Summer. Live Music Series. Rotary Botanical Gardens. 1455 Palmer Dr, Janesville. (608) 752-3885. rotarybotanicalgardens.org

15-17 Team World Horseshoes Tournament in Beloit. visitbeloit.com/calendar

16-17 Civil War Living History Days. Milton House Museum grounds. 18 S Janesville St, Milton. (608) 868-7772. miltonhouse.org

16 Historic Home Tour Time. TBD. Presented by the Evansville Grove Society. facebook.com/EvansvilleGroveSociety

16 Friends of Rock County Parks Annual Bike Ride. Starting and ending at Turtle Creek Parkway. 7am-2pm. rocktrailcoalition.org

16 Downtown Wine Walk. Downtown Janesville. 69 S River St, Janesville. (608) 728-3322. janesvillewinewalk.com

25 Memorial Day Parade. Beloit / South Beloit parade organized by the United Veteran's Memorial Day Parade Committee. visitbeloit.com/calendar

25 Memorial Day Parade & Ceremony. Downtown Janesville. Main St & Milwaukee St.

25 Memorial Day Recognition. 179 E Main St, Evansville. (608) 882-2335.

June

TBD 11th Annual Strawberry Shortcake Festival. 3-7pm. Emma's Table. 104 W Main St, Evansville. evansvilleeducationfoundation.org/

3 Story & Stroll in the Gardens. Rotary Botanical Gardens. 1455 Palmer Dr, Janesville. (608) 314-8415. rotarybotanicalgardens.org

12-14 June Days. Live music, food vendors, kid's activities. Purdy Park in Orfordville. facebook.com/orfordvillecommunityjunedays/

13 Market Day. 9am -1pm at 304 East Beloit St, Orfordville. facebook.com/orfordvillemarketdays

13 Janesville Morning Rotary's 25th Annual Pie Ride. Bicycling event with a family fun route plus 20K, 50K and 100K routes through scenic Southern Wisconsin and a delicious pie at the finish line. Downtown Janesville - Town Square. 65 S River St, Janesville. pieride.org

19 Evansville Annual Chamber of Commerce Golf Outing. Evansville Golf Club. 8501 N Cemetery Rd, Evansville. (608) 882-5131. evansvillechamber.org

21 Make Music Day Beloit. A celebration of the summer solstice to showcase musical talent worldwide. Beloit.

23 Father's Day Car Show. Rock County Historical Society. 440 N Jackson St, Janesville. (608) 756-4509. rchs.us

26-28 Shopiere Days. Carnival, live music, truck and tractor pulls, a vendor's market, softball, food and beer tents, fireworks. Sweet Allyn Park. 7149 South Cty J, Beloit. (608) 751-6218. shopieredays.com

26 Ice Cream Social. 4pm. Sponsored by the Friends of the Eager Free Public Library. Emma's Table, 104 W Main St, Evansville. (608) 882-2260. facebook.com/friendsofEFPL

27 Star Spangled Saturday. Food vendors, kid's games, pontoon rides, live music, and a performance by the Rock Aqua Jays Water Ski Show team. Fireworks at dusk sponsored by Festival Foods. Traxler Park. 600 N Main St, Janesville. rockaquajays.com

July

1-4 Milton 4th of July Celebration. Rhythm & Booms Live music, a softball tournament, car show, parade, and fireworks. Schilberg Park. 301 W High St, Milton. milton4thofjuly.com

3-5 A Lake Leota Fourth. Live music, local food, and more. 10am parade and fireworks at dusk on 4th. facebook.com/alakeleota4th/

4 Evansville 4th of July Fun Run/Walk. 7:30am Leonard Leota Park. 10K/5K/1mile run-walk. Register at: runsignup.com/race/wi/evansville/evansville4thofjulyrunwalk

4 Pops on the Rock. Concert and Fireworks in Beloit. visitbeloit.com/calendar

9 MACC Golf Outing. Glen Erin Golf Club. 1417 W Airport Rd, Janesville. (608) 868-6222

11 Market Day. 9am - 1pm. 304 East Beloit St, Orfordville. facebook.com/orfordvillemarketdays

16-18 JPAC's Outdoor Shakespeare: Comedy of Errors. Rock County Historical Society. 426 N Jackson St, Janesville. (608) 758-0297. janesvillepac.org

17-19 Great Midwest Pro Rodeo and Bull Riding. Thresherman's Park. 332 E County Rd M, Edgerton. (815) 823-3245. bighatrodeo.com

17-19 Tobacco Heritage Days. Live music, a car and truck show, the Rascal Run 5k, and activities for the whole family. Downtown & Central Park, Edgerton. edgertontobaccodays.com

18 Downtown Duck Dump. Janesville Town Square. 15 Dodge St, Janesville. downtownjanesville.com

19 Friends of Beckman Mill Park Ice Cream Social. 12-4pm. 11600 S Cty Rd H, Beloit. beckmanmill.org

26 Pedal the Peace Rides. 5409 S County D, Afton. (608) 481-1548. rocktrailcoalition.org

28- Aug 2 Rock County 4-H Fair. Rock County Fairgrounds. 1301 Craig Ave, Janesville. (608) 755-1470. rockcounty4hfair.com

29 Chasing Chad's Sundown Dash. 5k run/walk and a kids 400m. Monterey Park. 501 Rockport Rd, Janesville. chasingchad.com

30-2 Beetlejuice Jr! Presented by JPAC Kids, Janesville Performing Arts Center. 408 S Main St, Janesville. (608) 758-0297. janesvillepac.org

August

TBD Evansville Night Out. facebook.com/buildingasaferevansville

1-2 Tallman Arts Festival. Vendors, live music, food and drink, Lincoln-Tallman House museum tours, and children's activities. Rock County Historical Society, 440 N Jackson St, Janesville. (608) 756-4509. rchs.us

4 National Night Out. Free food and drinks, kid's games, community booths. Town Square, 69 S River St, Janesville. (608) 755-3134. janesvillewi.gov

5 Story & Stroll in the Gardens. Rotary Botanical Gardens. 1455 Palmer Dr, Janesville. (608) 314-8415. rotarybotanicalgardens.org

6-8 Summer Used Book Sale and Donation Days. Thursday 12-5pm, Friday 9am-5pm, Saturday 9am-12pm. Grange Mall (lower level). 19 W Main St, Evansville. Sponsored by the Friends of the Eager Free Public Library. (608) 882-2260. facebook.com/friendsofEFPL

7-8 Evansville's Citywide Garage Sale Days.

7 Downtown Beloit Street Dance. Live music. 5:30-11pm. downtownbeloit.com

8 Beloit Taco Takedown. A showdown of the tastiest tacos in town. 605 3rd St, Beloit. beloittacotakedown.com

8 Beloit KUBB Open. Pohlman Field. 2301 Skyline Drive, Beloit. visitbeloit.com/kubb/

8 Orfordville Market Day. 9am-1pm. 304 E Beloit St, Orfordville. facebook.com/orfordvillemarketdays

15 Beloit Dirty Dash. Ages 4-18. beloitrecreation.com/dirty-dash/

16 MACC Pork Roast & Milton Makers Market. North Goodrich Park, 20 Parkview Dr, Milton. visitmilton.com

22 Edgerton Pottery & Art Festival. Pottery displays, vendors, hands on activities, and demonstrations. Silverwood Park. 771 Silver Ln, Edgerton.

23 History in the Park. 12-3pm. Free. Topic TBD. Leonard Leota Park (upper pavilion), Evansville. facebook.com/evansvillegrovesociety

28-30 Pistons & Props Air & Car Show. Aircraft rides, activities, live music, vendors, and food. Southern Wisconsin Regional Airport, 4004 S Oakhill Ave, Janesville. pistonsprops.com

2026 Calendar of Events

Event dates, times, and details subject to change. Please visit websites or socials for the most up to date information.

September

TBD Thunder on the Rock Boat Racing. 11am-5pm. Stock outboard, modified outboard, junior classes, and more. marineracingclub.com

TBD Creek Fest. 3-10pm. Community celebration with live music, food, market. Creekside Place, 102 Maple St, Evansville. (608) 882-0407. creeksideplace.org

2 Story & Stroll in the Gardens. Rotary Botanical Gardens. 1455 Palmer Dr, Janesville. (608) 314-8415. rotarybotanicalgardens.org

3 Creekside Cruise Night. 5-8pm. Free. Creekside Place, 102 Maple St, Evansville.

4-7 Rock River Thresheree. Living history festival features working antique steam engines and equipment demonstrations. Thresherman's Park. 51 E Cox Rd, Edgerton. (608) 868-2814. thresheree.com

4-6 Art Infusion Murals. Sidewalk chalk art competition. Downtown Janesville. (608) 757-3171

5 Downtown Sidewalk Sale. Downtown Janesville. downtownjanesville.com

11-12 Chilimania & Country Edge Concert. Wisconsin State Championship CASI-Sanctioned Chili Cook-Off. A Traditional Chili Cooking Contest, and live music. Downtown Edgerton. 99 N Henry St, Edgerton. (608) 561-7566. chilimania.com

12 Orfordville Market Day. 9am-1pm. Indoor at Parkview High School. 408 E Beloit St, Orfordville. facebook.com/orfordvillemarketdays

12 Rock River Valley Carvers of WI. Show & Sale. Rock County Fair Grounds. 1301 Craig Ave, Janesville. (608) 931-0188. rockrivervalleycarvers.com

13 Corvan Neuenschwander Day Community Corn Roast. Free. Register online. Evansville Ford. 428 N Union St, Evansville. (608) 882-4700. evansvillefordmotors.com/corvan-neuenschwander-day-corn-roast/

13 Heritage Sunday at Beckman Mill. 11am-4pm. beckmanmill.org

19 Airing of the Quilts. Hosted by the Sassy Farm Chicks in Orfordville. This event takes over the downtown and Purdy Park area with quilts, quilting demonstrations, vendors, and more. sassyfarmchicks.com

19 The Flying Circus RC Fun Fly. Rock River Aero Modelers Society. 6806 S County Rd J, Beloit. rrams.net

19 Beloit Autorama. Preservation Park. 3444 S Riverside Dr, Beloit. beloitautorama.com

19 Twilight Tours & Tastings at the Milton House Museum. Experience the Milton House by candlelight. 18 S Janesville St, Milton. (608) 868-7772. miltonhouse.org

26 Downtown Wine Walk. Downtown Janesville. 69 S River St, Janesville. (608) 728-3322. janesvillewinewalk.com

October

TBD Haunted Basement. Select Fridays and Saturdays in October. Hop Garden. 18 E Main St, Evansville. (608) 882-1283. thehopgarden.net/evansville-taproom

1-31 Ice Age Trail Mammoth Hike Challenge. Free. Register online. iceagetrail.org/mammoth-hike-challenge

2-3 Vintage Shop Hop. Vintage, handmade and repurposed treasures at Evansville Main St proprietors. vintageshophop.blogspot.com

3 Fall in Fall Event. Rock River Heritage Park. 5801 N River Rd, Janesville. 11am-2pm.

3 Burntess Chevrolet Anniversary Party and Car Show. Burntess Chevrolet. 802 Genesis Dr, Orfordville. burntesschevy.com

4 Fall Fest at Carver-Roehl Park. 4907 S Carvers Rock Rd, Clinton. 11:30am-2:30pm. facebook.com/rockcountyparks/

7-10 Enchanted Forest and Hollywood Hayride. Family friendly for all ages. Palmer Park. 2501 Palmer Dr, Janesville. (608) 755-3030.

7 Story & Stroll in the Gardens. Rotary Botanical Gardens. 1455 Palmer Dr, Janesville. (608) 314-8415. rotarybotanicalgardens.org

8-11, 16-18 AAUW Used Book Sale Olde Towne Mall. 20 S Main St, Janesville. (608) 290-1911 or (608) 754-4544. aauw-janesville.net

10 Fall Fest & Monster Mash Market. Admission fee. Local vendors, food, refreshments, entertainment, swag bag, prizes and shopping. (608) 882-5131. evansvillechamber.org

10 Fall Wine Walk. Downtown Beloit. 2-6pm. Tickets available for purchase. downtownbeloit.com

10 Orfordville Fall Fest. Hosted at the Orfordville Fire Station, featuring a chili cook off, scarecrow contest, and more. orfordvillewi.gov

17 Junction Function BBQ competition. Bake-off, beer tent, music and family activities. Merchant Row, Milton. (608) 868-6222

21 Taste of Chamber. 5-8pm. Location TBD. greaterbeloitichamber.org

22 Edgerton Hospital Benefit Gala. Dickinson Hall. 1 W Fulton St, Edgerton. edgertonhospital.com

22 Treats on the Trail. Orfordville Walking Path behind Village Hall. Come in costume with a flashlight and trick or treat! orfordvillewi.gov

24 Halloweenweekend. Downtown Janesville. downtownjanesville.com

24 Downtown Zombie Run. BHCCU Festival Street. 69 S River St, Janesville. downtownjanesville.com

31 Downtown Beloit Halloween Costume Parade and Party. Live music, entertainment, and activities. downtownbeloit.com

31 Merchant Trick or Treat. Local businesses open their doors to hand out candy. Scavenger hunt. Trunk or Treat. Downtown Evansville. evansvillechamber@gmail.com, evansvillechamber.org

November

TBD Fall Chili Cook Off. Proceeds benefit the Humane Society of Southern Wisconsin. Hop Garden. 18 E Main St, Evansville. (608) 882-1283. thehopgarden.net/evansville-taproom

3 Wreaths on Parade Auction. Milton House Museum. 18 S Janesville St, Milton. (608) 868-7772. miltonhouse.org

7 Fall Festival Vendor Expo. Holiday Inn Express & Janesville Conference Center. 3100 Wellington Pl, Janesville. eventsbystacyllc.com

7, 21 Winter Farmers Market. Uptown Janesville Mall. 2500 Milton Ave, Janesville. (608) 289-9292. janesvillefarmersmarket.com

14 Orfordville Market Day. 9am-1pm. Parkview High School. 408 E Beloit St, Orfordville. facebook.com/orfordvillemarketdays

20-21 Olde Fashioned Christmas. Free event. Santa arrives in the morning. Carriage rides, and more. Downtown Evansville. (608) 882-5131. facebook.com/oldefashionedchristmas

20-22 Shop the Rock. Great deals and dining. Downtown Janesville. (608) 208-2055. downtownjanesville.com

21 Annual Holiday Bazaar. 9am-2pm. St John's Lutheran Church, 312 S Third St, Evansville. office@stjohns-lc.org, stjohns-lc.org

25 Love Light Tree Lighting Ceremony. 5pm at the Grange Mall, 19 W Main St, Evansville. 882-9900, aware@community-action.org, facebook.com/AwareEvansville/

25 Thanksgiving Pie Sale. 11am-3pm. Eager Free Public Library, 39 W Main St, Evansville. Sponsored by the Friends of the Eager Free Public Library. (608) 882-2260. facebook.com/friendsofEFPL friendsefpl@gmail.com

25 JWA's Thanksgiving Throwdown. Janesville Wrestling Alliance offers high-flying maneuvers, hard-hitting battles, and surprises in the ring. Holiday Inn Express. 3100 Wellington Place, Janesville. (608) 290-4071. jwatoday.com

25 Love Light Tree Lighting Ceremony. 5pm at the Grange Mall, 19 W Main St, Evansville. (608) 882-9900. aware@community-action.org facebook.com/awareevansville/

26 Festival Foods Turkey Trot. 5-mile run, 2-mile fun run, or an 2-mile walk, 2-mile Dog Jog, Boys & Girls Club/YMCA. 200 W Court St, Janesville. festivalfoodsturkeytrot.com

27 Grand Lighted Holiday Parade & Tree Lighting. 5-8pm. Downtown Beloit. downtownbeloit.com

28 Small Business Saturday. Small businesses in all communities hosting specials, events, etc.

December

1-7 Merry Milton Week. Kick off the holiday season with activities throughout Milton. visitmilton.com

4 Holidazzle. Downtown Beloit. 5-9pm. Art, crafts, vendors, Santa, music, trolley rides. downtownbeloit.com

4-6 Janesville's Jolly Jingle. Activities for all ages including ice skating, a lighted parade, live theater, fireworks, a tree lighting, family entertainment, and kids activities. Downtown Janesville. (608) 755-3030. janesvillejollyjingle.com

5 Orfordville Christmas Parade. Downtown Orfordville. orfordvillewi.gov/events

5-6 Rock-N-Farm Toy Show. Toys, country crafts & clothes, canned & baked goods. Holiday Inn Express, 3100 Wellington Pl, Janesville. (262) 749-0252

6 Ecumenical Holiday Choir Concert. 5:30pm. Free. Evansville United Methodist Church, 21 S Madison St, Evansville.

11-13 A Christmas Carol at the Milton House. Milton House Museum. 18 S Janesville St, Milton. (608) 868-7772, miltonhouse.org

Entertainment

ABC Supply Stadium
skycarp.com

Beloit Art Center
beloitartcenter.com

Beloit Civic Theatre
beloitcivictheatre.org

Beloit College Athletics
beloitcollegeathletics.com

Beloit Janesville Symphony Orchestra
beloitjanesvillesymphony.org

Blackhawk Tech Athletics
athletics.blackhawk.edu

Edgerton Performing Arts Center
edgerton.k12.wi.us

Evansville Community Theatre
ecttheater.com

Friends of Riverfront
friendsofriverfront.com

Henry Dorrbacker's
henrydorrbackers.com

Janesville Jets Hockey Team
janesvillejets.com

Janesville Little Theatre
janesvillelittletheatre.org

Janesville Performing Arts Center
janesvillepac.org

Janesville Comedy Cabin
cabinlaughs.com

Kids, Fun and Drama (KFAD)
kfad608.com

Laura Aldrich Neese Theatre
beloit.edu

Rock Aqua Jays Water Ski Show
rockaquajays.org

Stage One, Inc
stageonewi.org

Theatre Unlimited, Inc
tuijanesville.org

The Castle Beloit @ 501 Prospect
thecastlebeloit.com

University Theatre
uww.edu/rock

UW Whitewater at Rock County
uww.edu/athletics

Woodman's Sports and Convention Center in Janesville
woodmanscenter.com

Rock River Repertory Theatre
rockriverrep.com

Children's Museum of Rock County

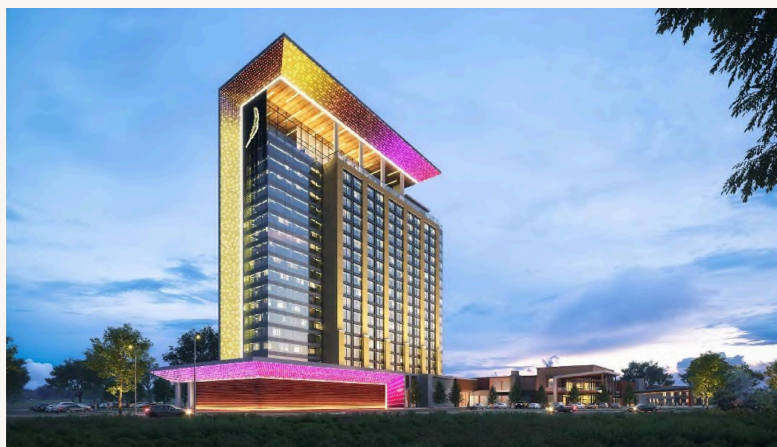
With an anticipated opening in Fall 2026, the Children's Museum of Rock County is a new, hands-on learning destination coming to downtown Janesville. The museum will be uniquely housed in the historic First National Bank building, reimagining this iconic local landmark as a vibrant space for play, exploration, and discovery. Families will find engaging experiences in science, art, culture, and imaginative play. The Children's Museum of Rock County will offer a welcoming, inclusive space where every child can learn, create, and belong.



Rendering of Children's Museum of Rock County

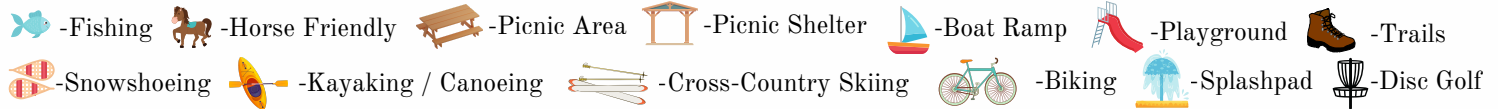
Ho-Chunk Gaming in Beloit

The Ho-Chunk Nation is currently developing a new casino, hotel, and convention center at the corner of Willowbrook and Colley roads, near Interstate 39/90. Once complete, it will be the second-largest casino in Wisconsin, featuring more than 1,500 slot machines, 44 table games, a sportsbook, and a casino bar. The 240,478 square-foot casino is slated to open in the summer/fall of 2026. Phase two of the project, expected to open in fall 2027, will add a 76,413 square-foot convention center and an 18-story hotel with 312 guest rooms, four restaurants, and a spa.



Rendering of Ho Chunk Gaming

Rock County Parks & Trails (List includes county & city parks)



BELOIT

- 1 Big Hill Park** 1101 Big Hill Rd
Paved & gravel walkways
- 2 Dr. George W. Hilliard Park** 1443 Athletic Ave
6 acres
- 3 Beckman Mill Park** 11450 S County Hwy H
52 acres ~ Historic features
- 4 Preservation Park** 3444 S Riverside Dr
- 5 Riverside Park** 1160 Riverside Dr
Rock River ~ 4 miles paved trails ~
Tennis courts ~ Paddle boat rentals
- 6 Schollmeyer Park** 2767 E Trail Dr
1 acre ~ Access to Turtle Creek
- 7 Summit Park** 1218 Henry Ave
Playground & Splash pad ~
Basketball court ~ Soccer field
- 8 Sweet-Allyn Park** 7149 S County Hwy J
39 acres ~ Turtle Creek ~ Softball
diamond ~ Canoe launch
- 9 Vernon Park** 934 Vernon Ave
Playground ~ Splashpad ~ Football field ~
Baseball diamond

CLINTON

- 10 Carver Roehl Park** 4907 S Carvers Rock Rd
52 acres ~ 2 miles of unpaved trails ~
Limestone outcroppings
- 11 Farmers Park** Located on Mill St
Pelishkek-Tiffany Nature Trail ~5.5 miles
unpaved trails ~ Snowmobile trails
- 12 Lee Park** 9205 E County Hwy W
39 acres ~ Softball diamond ~ Wildlife area
- 13 Turtle Creek Parkway** 6528 S Smith Rd
4 acres ~ Turtle Creek ~ Building
available for rent
- 14 Turtle Creek Access @ 140** 5501 S Hwy 140
1 acre ~ Popular kayak & canoe
access spot for Turtle Creek
- 15 Indianford Park** 8901 N Country Rd F
1 acre ~ Known for fishing ~ Rock River
- 16 Murwin Park** 6407 W Caledonia Rd
48 acres ~ Yahara River shoreline
- 17 Miller Farm Wetlands Conservancy**
8104 N Hwy H
59 acres undeveloped park ~ Confluence
of Yahara River and Rock River

EVANSVILLE

- 18 Lake Leota Park** 5 Antes Dr
Lake Leota access ~ Baseball
diamond ~ Basketball & tennis courts
~ Skate park ~ Splash pad
- 19 Magnolia Bluff Park** 4002 N Croak Rd
122 acres ~ 6 miles unpaved trails

MILTON

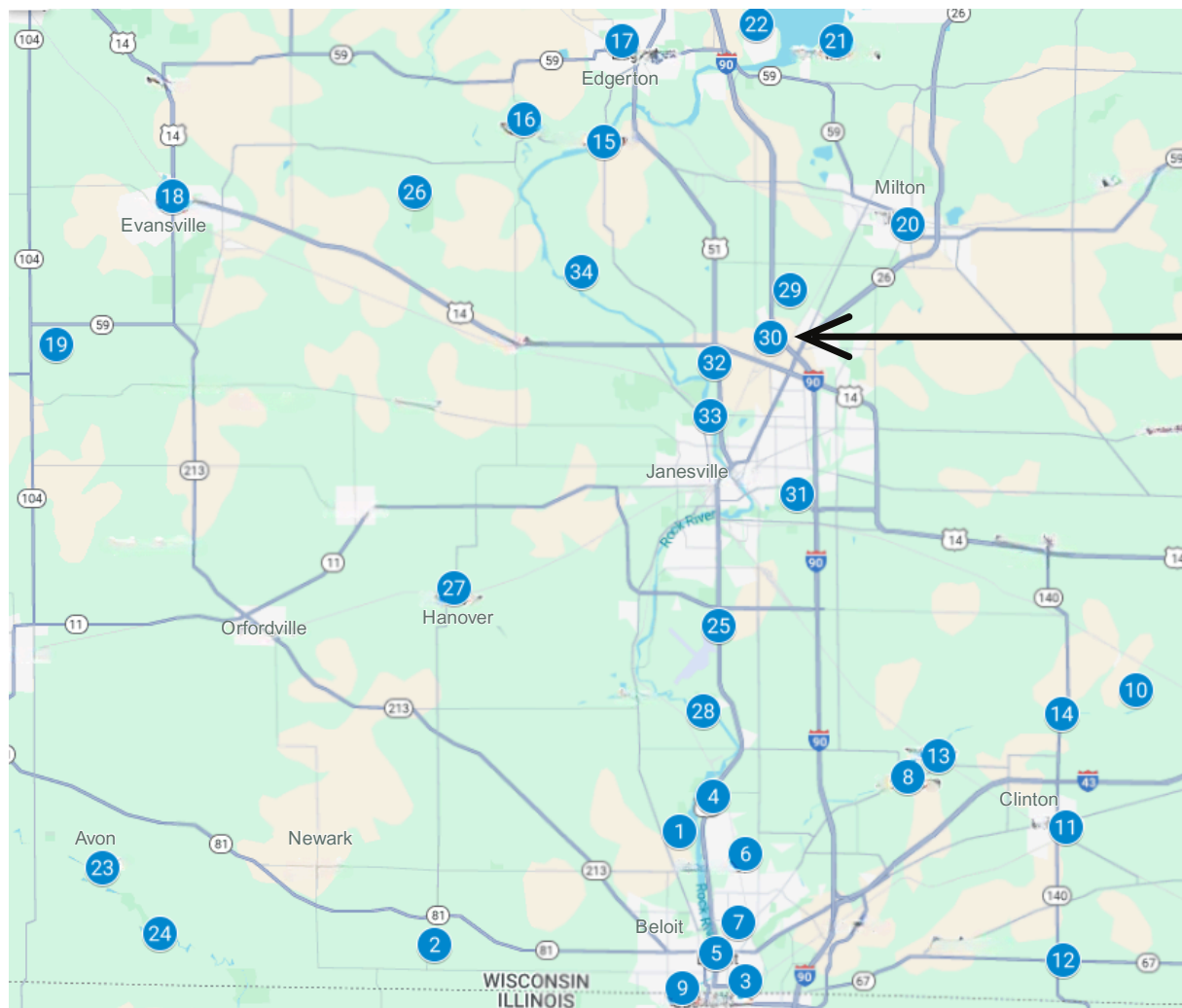
- 20 Goodrich Square Splashpad** 413 Parkview Dr
- 21 Royce Dallman Park** 11500 N Charley Bluff Rd
4 acres ~ Lake Koshkonong
- 22 Koshkonong Lake Access**
1005 E Lakeside Dr
13 acres ~ Lake Koshkonong

VILLAGE OF AVON

- 23 Avon Wildlife Area**
9731 S Main St. Brodhead, WI
6 acres undeveloped ~ Sugar River ~
Wildlife area
- 24 Sugar River Park** 11317 S Nelson Rd, Brodhead, WI
7 acres ~ Sugar River access ~
Canoe launch

JANESVILLE

- 25 Airport Park** 1020 W Knilians Rd
2 acres ~ Air traffic viewing
- 26 Gibbs Lake Park** 9103 W Gibbs Lake Rd
278 acres ~ 3/4 miles of
shoreline ~ Unpaved trails
Hanover Wildlife Area
2665 S Cty Hwy H
27 undeveloped acres ~ Wildlife refuge
- 27 Happy Hollow Park** 1731 W Happy Hollow Rd
185 acres ~ Rock River ~ 4 miles unpaved trails
- 28 Ice Age Park**
5504 N Sable Dr
3.2 acres ~ undeveloped park ~
Access to Ice Age Trail
- 29 Ice Age Trail** 4101 Kennedy Rd
- 30 Palmer Park** 2501 Palmer Dr
164 acres ~ CAMDEN
playground ~ Zipline ~ Wading
pool ~ Restrooms
- 31 Walt Lindeman Sportsman's Park** 3411 N Hwy 51
10 acres ~ Restrooms & playground
- 32 Riverside Park** 2600 Parkside Dr
Concession stand ~ Bathrooms ~ Zipline
~ Golf course
- 33 Rock River Heritage Park** 5801 N River Rd
178 acres ~ Lake



*Map created with Google MyMaps

Looking for a day of fun with the kids?
Try Palmer Park, Janesville's second largest park at 164 acres. The park includes the handicap accessible CAMDEN playground, the Palmer Pool, a large zipline, and a connection to the Ice Age Trail. Palmer Pool was renovated and reopened in 2025 with a zero depth entry area, aquatic play feature, locker rooms, concession stands, and lap swimming area.

janesvillewi.gov
janesvillecvb.com

Rock County Map

Whether you're in it for the stunning views or the family bonding, Rock County has a plethora of trails & parks for your leisure. Picnic shelters are available for reservation at many of the parks listed. For more information about any of the parks listed, please visit the host city website or the county park listing.



Photo Credit: Mark Preuschl

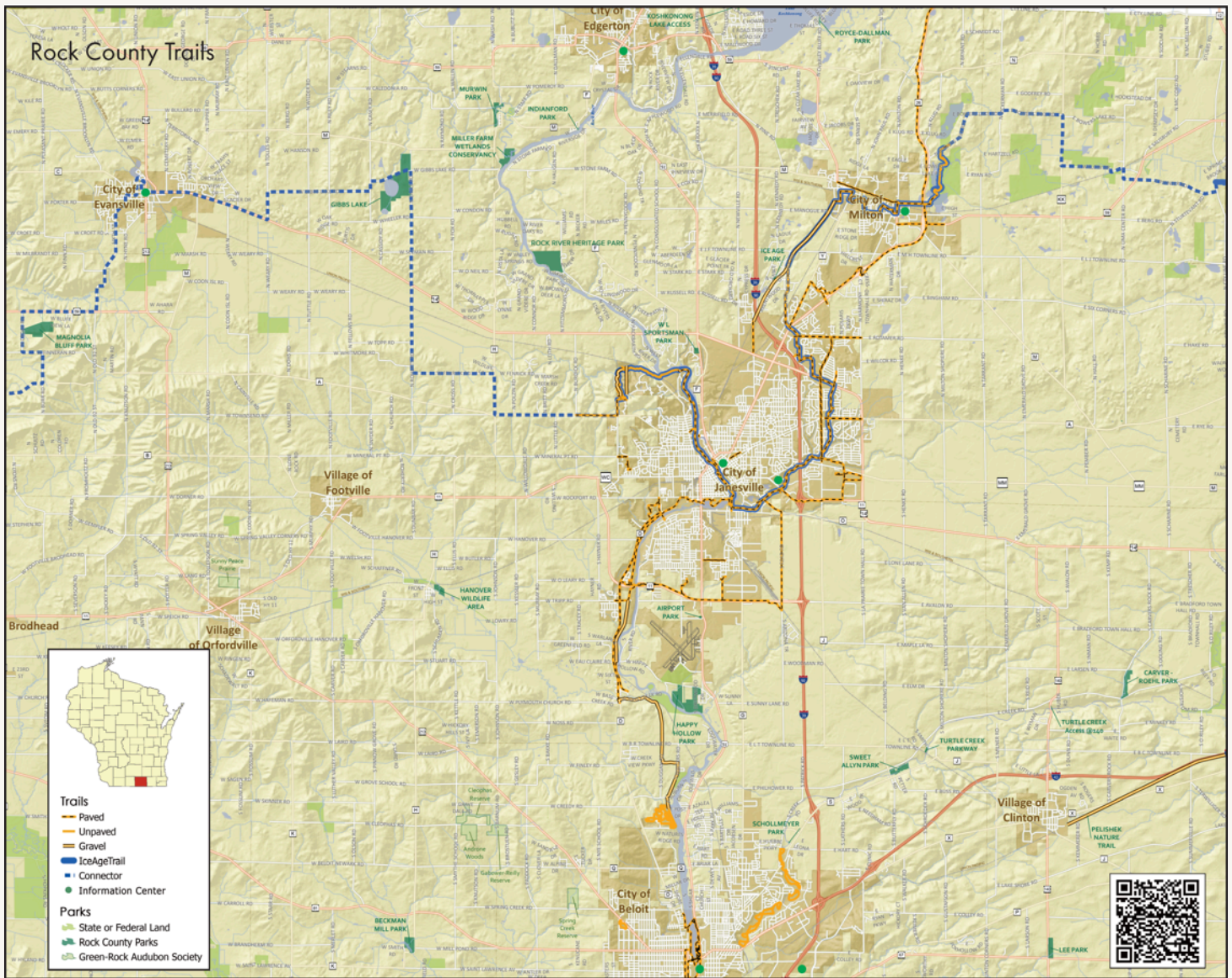
Beckman Mill Park in Winter



Palmer Park ~ CAMDEN Playground



co.rock.wi.us/departments/public-works-parks/parks-info-maps



Rock County Trail Map

The Ice Age Trail is one of just 11 National Scenic Trails in the United States, offering the chance to experience many of Wisconsin's most unique glacial formations. The route includes both paved and unpaved sections, providing a variety of terrain for all types of hikers.



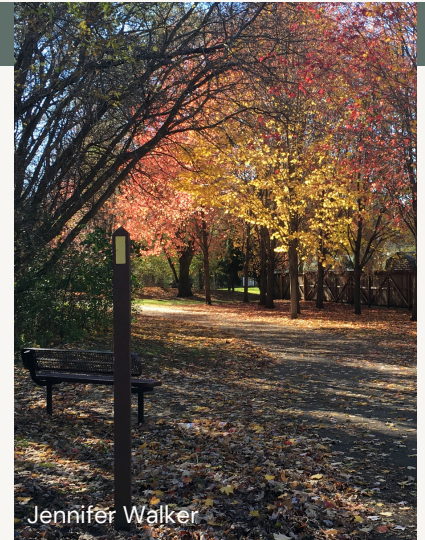
Robin Herring

Devil's Staircase Segment



Mariah Calley

Magnolia Bluff



Jennifer Walker

Janesville Segment of Ice Age Trail

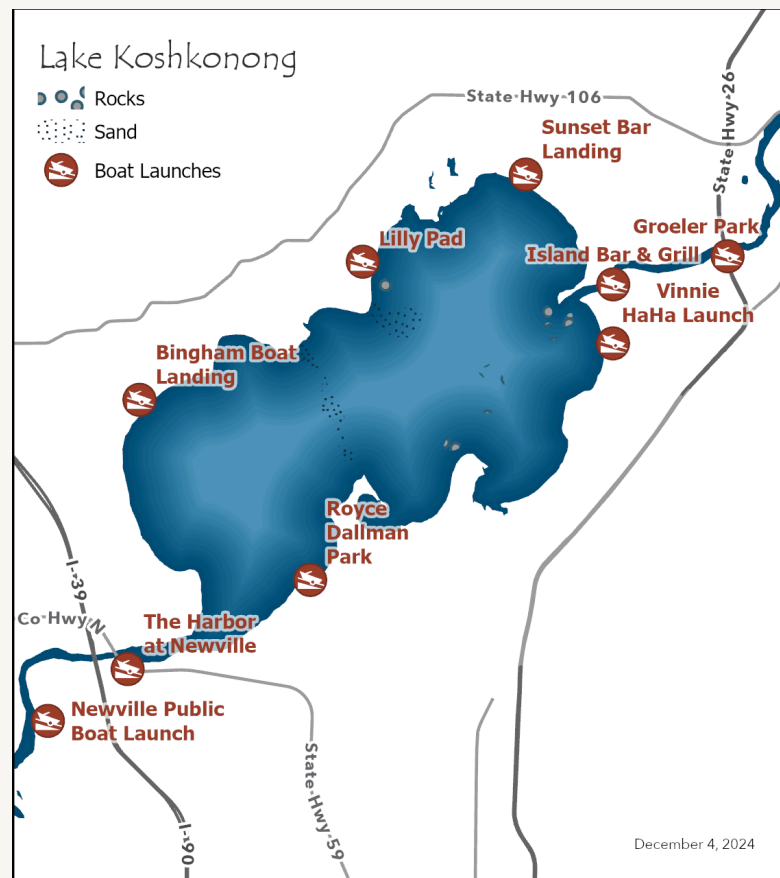
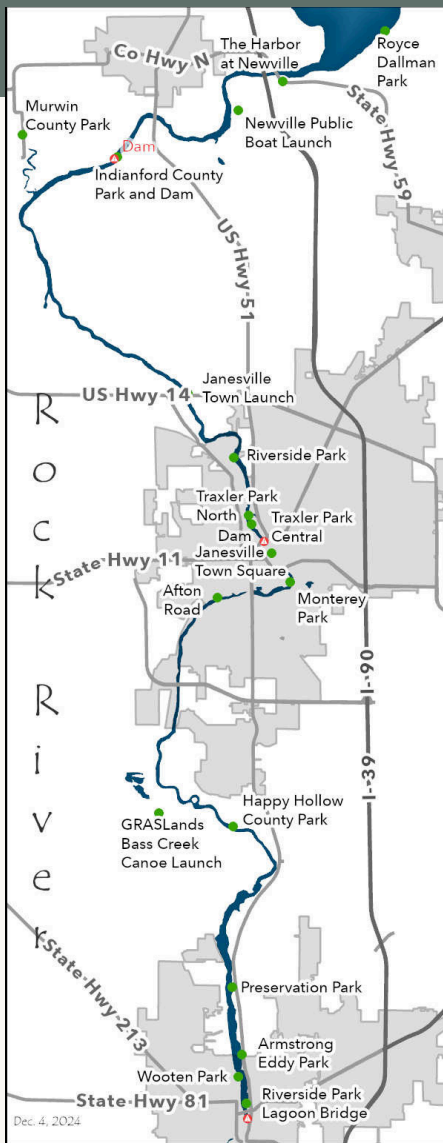
Mammoth Hike Challenge: Hike 46 miles on the Ice Age Trail during October and visit three of the Trail Communities to earn a hiking certificate and a limited-edition patch. Evansville, Janesville, and Milton are all official Trail Communities located in Rock County. iceagetrail.org/mammoth-hike-challenge/

Boat Launches & Water Access Points

Over 36 miles of the Rock River is located in Rock County. With numerous access points, the Rock River offers fishing, boating, kayaking, canoeing, and more!

Lake Koshkonong, located on the northern end of the Rock County portion of Rock River, is a 10,595-acre lake that is a destination for boating, fishing, swimming and more. During the colder months the lake is perfect for snowmobiling and ice fishing.

An ideal spot for fishing, Lake Koshkonong has musky, panfish, largemouth bass, smallmouth bass, northern pike, walleye, and catfish.



Watercraft Rental and Sales

Anchor

718 E State Rd 59, Edgerton, WI
anchorfun.com

Floating Toy Pontoon Rentals

723 E Ellendale Rd, Edgerton, WI
floatingtoy.com

visitedgertonwi.com/lake-koshkonong/

Rock River Boat Launches and Parking

Anchor

718 WI-59, Edgerton, WI

Armstrong Eddy Park

1930 Hwy 51, Beloit, WI

Indianford County Park

8901 N County Rd F, Edgerton, WI

Preservation Park

3444 S Riverside Dr

Wootton Park

1451 4th St, Belot, WI

Lake Koshkonong Boat Launches and Parking

Glen Oaks Beach

Indianford County Park

8901 N County Rd F, Edgerton, WI

Newville Public Boat Launch

10007 N Ellendale Rd, Edgerton, WI

Royce-Dallman Park

11500 N Charley Buff Road, Milton, WI

Rock County Recreation

Public Golf Courses

Prairie Woods Golf Course - 12601 E County Rd A, Albion
Krueger Golf Course - 1611 Hackett St, Beloit
Creekview Par 3 - 770 Albion Rd, Edgerton
Towne Country Club - 115 Jenson St, Edgerton
Evansville Golf Club - 8501 N Cemetery Rd, Evansville
Bass Creek Golf Club - 1303 S Murphy Rd, Janesville (Footville)
Blackhawk Municipal Golf Course - 2100 Palmer Dr, Janesville
Cecilia's Golf Course - 1901 S Emerald Grove Rd, Janesville
Riverside Municipal Golf Course - 2100 Golf Course Rd, Janesville
Glen Erin Golf Club - 1417 W Airport Rd, Janesville

Private Golf Courses

Beloit Club - 2327 S Riverside Dr, Beloit
Janesville Country Club - 2615 W County Rd A, Janesville

Aquatic Centers

Krueger Pool - 1700 Hackett St, Beloit
Edgerton City Pool - 312 N Main St, Edgerton
Evansville Aquatic Center - 360 Burr W Jones Circle, Evansville
Rockport Pool - 2801 Rockport Rd, Janesville
Palmer Park Wading Pool- 2501 Palmer Dr, Janesville

Ice Arenas

Edwards Ice Arena - 2101 Cranston Rd, Beloit
Woodman's Sports & Convention Center -
2510 Milton Ave, Janesville



Nature's Touch Activity Center

Rotary Botanical Gardens offers Story & Stroll events for young kids May - June and August - October, as well as a variety of summer camps for kids of various ages.

A great option for family friendly fun from May - October

is Nature's Touch Activity Center. Tractor train rides, giant bouncing pillows, duck coop, gemstone mining, playground areas, pedal karts and so much more!

\$10 admission fee for ages 2 & up.
naturestouchinc.com



Visit Beloit

Music at Harry's Place

Harry's Place is located at the Harry Moore Pavilion in Riverside Park off of Hwy 51 in Beloit. Music at Harry's place is a free concert series including food trucks, every Friday from 7-9pm, June thru August, with the exception of the 1st Friday in August. You can also enjoy free dance lessons on the second and fourth Mondays of June, July and August from 7-9pm.

Where can I find more fun?

rockcounty.org	janesvillecvb.com
visitmilton.com	visitedgertonwi.com
visitbeloit.com	evansvillechamber.org
co.rock.wi.us/departments/public-works-parks	



ROTARY
BOTANICAL
GARDENS

Plan Your Visit to Where Beauty Blossoms

Uncover a remarkable 20 acres filled with beautiful gardens, showcasing 20 distinct themes ranging from Japanese to French Formal, along with over 4,000 plant varieties. Wander through meandering paths, vibrant blossoms, and serene water features for a tranquil retreat in the heart of Janesville.

Highlights Include:

- ✓ 20 Themed Gardens
- ✓ 4,000 Plant Varieties
- ✓ Guided Tours
- ✓ Educational Programs
- ✓ Gift Shop Featuring Local Artists
- ✓ Seasonal Events & Festivals

1455 Palmer Dr.
Janesville, WI 53545
608-752-3885

rotarybotanicalgardens.org



Fall for Rock County

In recent years Fall has become more than just a season, it has become a way of life. Starting as early as July (Summerween, anyone?) people embrace the cozy fall vibes that Rock County has to offer. From farmers markets to haunted trails, there are a variety of family-friendly attractions to satisfy all of your Fall cravings.

Skelly's Farm Market

2713 S Hayner Rd, Janesville

Skelly's is a year-round family favorite! They have seasonal offerings varying from strawberry picking in the late Spring, a sunflower maze in the Summer, and Pumpkin picking beginning in early Fall. Skelly's Fall also includes apple cannons, wagon rides, corn mazes, a robust playground with a variety of large wooden play structures and too many slides to count! Their Fall treats include hot and cold cider, pumpkin donuts, apple donuts, caramel apples and so much more! Take the kids to spend the afternoon on the playground and complete the corn maze, then treat everyone to a hot caramel cider and donuts!



Orfordville's Treats on the Trail ~ Oct 22nd 2026

303 E Beloit St, Orfordville

This annual event is run by the local Lions Club and takes place on the Walking Path behind Orfordville Village Hall. Costumes, glow sticks, and flashlights are encouraged, and be sure to bring your candy bag!

History and Mystery: A Paranormal Investigation at Milton House Museum

18 S Janesville St, Milton

Date is TBD for 2026. Complete a paranormal investigation inside the Milton House Museum using paranormal equipment, then enjoy a stroll around Goodrich Park while sharing mysterious and ghostly stories.



Orfordville's Treats on the Trail

Downtown Beloit Halloween Costume Parade & Party ~ Oct 31st 2026

Meet at the intersection of College St. & Grand Ave.

Everyone is invited to show off their costumes in the parade, followed by trick-or-treating with downtown businesses and the Farmers' Market vendors. Enjoy live music, entertainment, and activities. Costume parade starts at 10am and begins at Horace White Park.



Beloit Farmers Market

Visit Beloit

Farmers Markets (May - Oct)

Apple Hut

1718 Walters Rd, Beloit
visitbeloit.com/listing/apple-hut/

Hermanson Pumpkin Patch

127 Cty Hwy N, Edgerton
hermansonpumpkinpatch.com

Beloit Farmers Market

Saturdays 8am-1pm
State Street & Grand Ave, Beloit
downtownbeloit.com

Janesville Farmers Market

Saturdays 8am-1pm
Main Street in downtown Janesville
janesvillefarmersmarket.com

Fermenting Cellars

2004 W Manogue Rd, Janesville
fermentingcellarswinery.com

Meyer's Farm Market

1329 M-H Townline Rd, Milton
facebook.com/meyersfarmmarket

Hawk's Orchard & Farm

9034 N Serns Rd, Milton
facebook.com/hawksorchardandfarm

Rubber Ducky Winery & Country Market

232 S Janesville St, Milton
northleafwinery.com

Rock County Farmers Market

Sundays 8am-1pm
5013 W Hwy 11, Janesville
rockcountyfarmersmarket.com

Skelly's Farm Market

2344 Hayner Rd, Janesville
skellysfarmmarket.com

Timber Hill Winery

8220 N John Paul Rd, Milton
timberhillwinery.com

Winter Wonderland

Snowshoe Rental

Rock County Parks offers snow shoe rentals from youth, up to 100 pounds, to adults up to 250 pounds. Reservations must be made in advance during office hours (Mon thru Fri 7am-3:30pm) with the Rock County Parks Department at (608) 757-5450. Visit them online for pricing information.

facebook.com/rockcountyparks

co.rock.wi.us/departments/public-works-parks

Snowmobiling

Rock County offers a plethora of snowmobile trails maintained by local clubs. For maps, conditions, and more visit Rock County Parks - Snowmobile trails.

Snowmobile Hotline: (608) 757-5458

co.rock.wi.us/departments/public-works-parks/snowmobile-trails

Snowmobile Trails Map

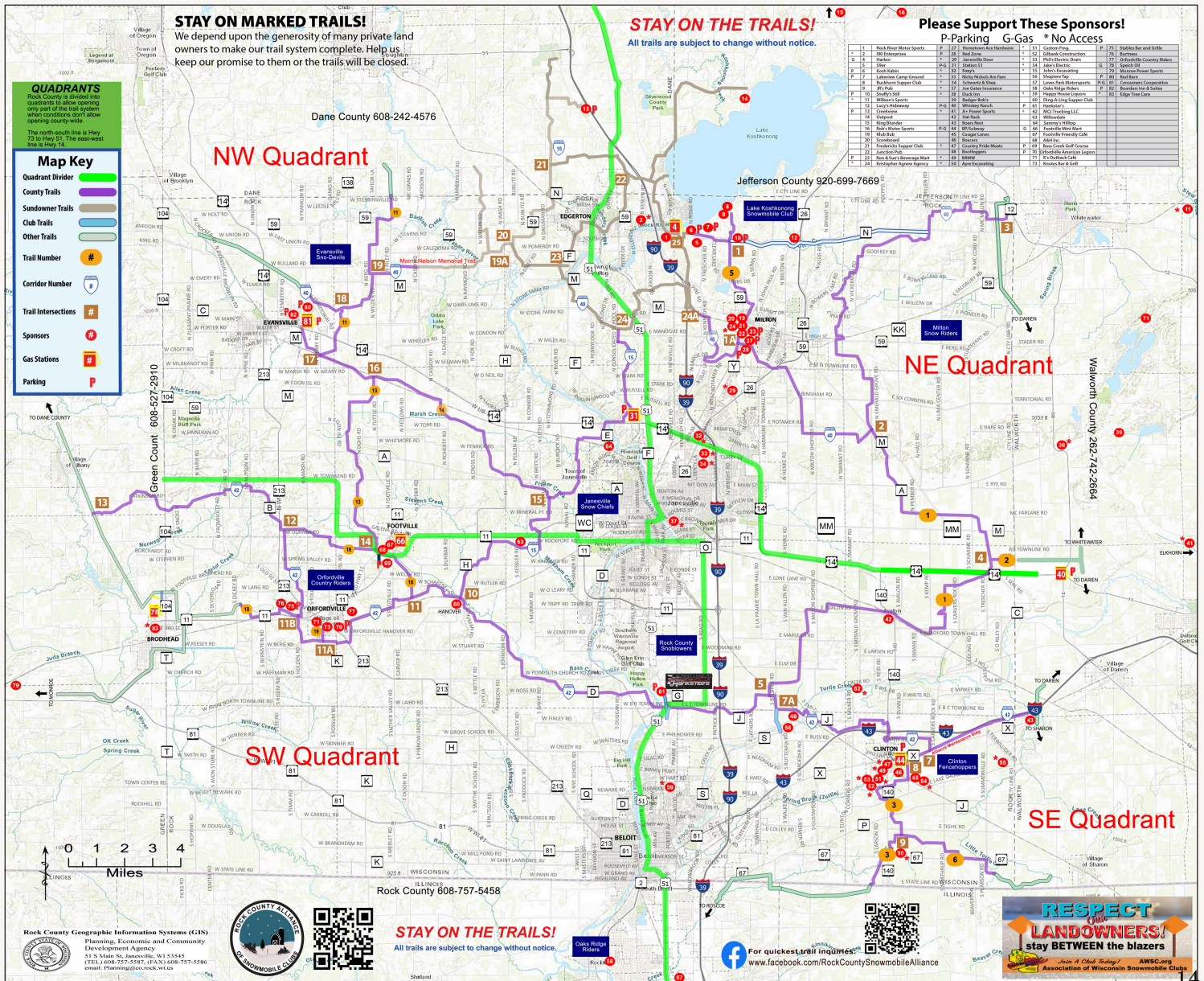


Photo Credit: Mark Preuschl

Sledding at Hospital Hill in Beloit



Photo Credit: Peer Canvas

Edwards Ice Arena

Cooksville

Known as “the town that time forgot” because technology bypassed the community around the beginning of the 20th century, Cooksville is a jewel of well-preserved mid-19th century Green Revival and Gothic Revival architecture. Approximately 35 buildings and historic sites comprise The Cooksville Historic District.

The Cooksville Farmhouse Inn is the perfect place to stay for family gatherings or for a comforting retreat from the hustle & bustle of city life.

Clinton

If hiking is your thing, come and enjoy the **Pelishak-Tiffany Nature Trail** that starts in the Village and goes east into Walworth County, or hike or cross-country ski through **Carver-Roehl County Park**, where the magnificent geological formations provide a scenic backdrop.

Visit this friendly community the first Friday in December for the **Winter Wonderland Festival**, including seasonal activities and the famous **Lighted Parade**. Visit clintonactivities.com to view the **Clinton Community Activities Program**.

Town of Beloit

Located between Beloit & Janesville, the Town of Beloit presents visitors with a healthy indulgence of rural charm. Boating and water sports have a long tradition in the Town of Beloit, as the **Rock River** provides abundant opportunity for water oriented recreation. The community's **Armstrong Eddy and Preservation Park** both have boat launching facilities and ample parking for visitors who wish to enjoy the river's scenery, water sports and fishing. You can access both park locations from US Hwy 51.

Wild turkeys are often seen near the scenic **Rock River Prairie Preserve**, situated above the Rock River.

Orfordville

Orfordville is the perfect destination for a peek at life in small town America, situated at the corner of Hwy 213 & Hwy 11.

Starting in May, Orfordville Market Days is at Market Lot once a month through August, followed by an indoor Winter Market in November at the local High School. Find local vendors, kids activities, and more!

In June, the annual **Orfordville Community June Days** takes place in Purdy Park. This community event is known for its live music, and features kids activities and a variety of food trucks throughout the weekend.

In August, the Annual **Airing of the Quilts** event that takes place throughout the downtown & Purdy Park has become a huge draw for quilt admirers & enthusiasts everywhere! Visitors from across the country come to see the long arm quilting demonstrations, Quilts of Valor presentations, quilt displays, and more.

Join us on the first weekend of December for the annual **Christmas Parade** that runs through the downtown and stops at Purdy Park, where Santa Claus is waiting with hot chocolate to greet everyone! Follow it up with a visit to the **Children's Christmas Benefit** at the Legion. This benefit includes a visit from Santa, raffles, dinner, and more.

For more information pertaining to events please visit our community calendar at orfordvillewi.gov/events.



Quilt displays during Airing of the Quilts in Orfordville



2026 Events

Apr Spring Fling - orfordville.org

May 2 Rummage Sale Day - Village wide rummage sales - orfordville.org

May 9 Market Day 9am-1pm - Across from 303 E Beloit St - facebook.com/orfordvillemarketdays

Jun 12 - 14 June Days - 100 W Church St - Live music, games, and more. facebook.com/orfordvillecommunityjunedays

Jun 13 Market Day 9am-1pm - Across from 303 E Beloit St - facebook.com/orfordvillemarketdays

Jul 11 Market Day 9am-1pm - Across from 303 E Beloit St - facebook.com/orfordvillemarketdays

Aug 8 Market Day 9am-1pm - 721 Genesis Dr - facebook.com/orfordvillemarketdays

Sep 12 Market Day 9am-1pm - 100 W Church St - facebook.com/orfordvillemarketdays

Sep 19 Airing of the Quilts - sassyfarmchicks.com

Oct 3 Burtness Chevrolet Car Show - 802 Genesis Dr - DriveBurtness.com

Oct 10 Fall Fest - Fire Department Chili Cook Off - orfordville.org

Oct 22 Treats on the Trail - 303 E Beloit St - facebook.com/orfordvillelionsclub

Nov 14 Market Day 9am-1pm - 408 W Beloit St - Indoor at Parkview High School - facebook.com/orfordvillemarketdays

Dec 5 Lion's Club Holiday Parade - facebook.com/orfordvillelionsclub

Dec 5 Children's Christmas Benefit - 3913 Hwy 213 -

<https://www.facebook.com/childrenschristmasbenefit/>



206 E Beloit St
Orfordville WI 53576



EASY TO FIND, HARD TO LEAVE!

Open daily at 10:00am ~ Sundays at 9:00

Friday Fish Fry

All day walleye, bluegill, cod, catfish, jumbo shrimp, and homemade potato pancakes

Prime Rib on Saturdays from 430 - 8pm

Catering & Carry Out (608) 879-2011

KnutesBarandGrill.com



Knutes Bar and Grill



Only in Orfordville

Orfordvillewi.gov

BELOIT

Where Stories Begin

Write your own Beloit story through our palpable energy, welcoming personalities, and by experiencing our unique and authentic travel adventures that can only be found here.



MEMORABLE DINING SCENE

- Three Supper Clubs
- Locally Owned Restaurants
- Cozy Cafés
- Delectable Desserts
- Brewery, Wineries, & Bars
- Upscale Dining



SEASONAL OUTDOOR ADVENTURE

- Camping & Beach
- Parks & Nature Centers
- Historical Walking Trail
- Farms & Orchards
- Recreational Sports
- Outdoor Art Trail



VIBRANT ENTERTAINMENT

- Sports
- Performing Arts
- Museums
- Theatres & Cinemas
- Galleries & Public Art
- Music & Nightlife



FLOURISHING DOWNTOWN

- Baseball Stadium
- Shopping
- Events & Festivals
- Boutique Hotels
- Ice Cream & Candy
- Farmers' Market

With its beautiful natural surroundings, cultural attractions, family-friendly accommodations, and a calendar full of events, each season brings new adventures in our charming city. Pack your bags, gather your loved ones, and head to Beloit!



ANNUAL EVENTS

WINTER

- Beloit Winterfest
- Grand Lighted Holiday Parade
- Holidazzle
- Maple Sugar Fest
- Home Run Holiday Lights

SPRING

- Beckman Mill Tours (May-Oct)
- Beloit International Film Festival
- Beloit Sky Carp Minor League Baseball (Apr-Sep)
- Spring Wine Walk
- Farmers' Market (May-Oct)
- Fridays in the Park (May-Sep)

SUMMER

- AJGA Girls Junior All-Star Championship
- Beloit Kubb Open
- Dancing at Harry's Place (Jun-Aug)
- Dirty Dash
- Make Music Day
- Music at Harry's Place (Jun-Aug)
- Juneteenth Celebrations
- Pops on the Rock
- Street Dance
- Taco Takedown

FALL

- Beloit Autorama
- Beloit Heritage Days
- Downtown Fall Fest
- Fall Wine Walk
- Halloween Parade & Party
- Taste of the Chamber
- Winter Crafter & Farmers' Market (Nov-Apr)



Scan the QR code for details on these events and more, where to eat, where to play, and where to stay!



VISITBELOIT.COM

60 Miles South of Madison
75 Miles West of Milwaukee
90 Miles West of Chicago



VISIT Edgerton

ALBION • LAKE KOSHKONONG • NEWVILLE

FESTIVALS & EVENTS

Friday Night Skating
Tri-County Community Center
Every Friday

Are You Ready For It? A Taylor Experience
Tribute to Taylor Swift
Edgerton Performing Arts Center
Feb 7

Pianomania!
Rockin' the 1950s with Jared Freiburg
Edgerton Performing Arts Center
Apr 18

Michael Cavanaugh – Music of Billy Joel &
Elton John
Edgerton Performing Arts Center
May 2

Edgerton Night Market
Downtown
Monthly May - Sept

Great Midwest Pro Rodeo and Bull Riding
Thresherman's Park
Jul 17 - 19

Tired Iron Car Shows
Albion Park
2nd Wednesdays, May - Sep

Tobacco Heritage Days
Downtown & Racetrack Park
Jul 17 - 19

Edgerton Pottery & Art Festival
Racetrack Park
Jul 18

Rock River Thresheree
Thresherman's Park
Sept 4 - 7

Chilimania & Country Edge
Downtown
Sept 11 & 12

SHOPPING AND DINING

Edgerton has a wide array of antiques, home decor, boutiques, and crafts from local artisans. No matter your style, there is something tasty waiting for you to eat after shopping -- pubs, supper clubs, cafés, even a restaurant right on Rock River.



COMMUNITY AND HISTORY

Edgerton is home to many different events and activities such as Tobacco Heritage Days, Chilimania, car shows, and other community activities. Visit the Sterling North Museum, the childhood home of Sterling North, who wrote such classics as *So Dear to My Heart*, *The Wolfing*, and beloved children's book *Rascal*, an autobiographical story about raising a raccoon in the early 1900s.



OUTDOORS

Embrace Edgerton's outdoor life with plenty of water recreation and natural amenities.



Golf

Edgerton is home to a variety of public golf options from a quick par 3 to a more challenging 27-hole regulation course at a resort complete with dining and overnight accommodations.

On the Water

Home to 10,500-acre Lake Koshkonong, Edgerton is the ideal place to float along on a pontoon boat, take part in water sports, or fish year round. Kayak the Yahara River with plenty of wildlife sightings.

Trails and Parks

Hike, bike, run, walk, or roll through our beautiful trails and public parks. Edgerton is also home to a variety of campgrounds. During the winter, find adventure on the snowmobile trails.

Photo credits to Kim Hoholek and Full Spectrum Photography

VisitEdgertonWI.com •



Evansville

Shop, bike, fish, stroll around. So much variety in and around Evansville!

2026 Events

February 21 Chocolate Extravaganza | Creekside Place
March 1 FFA Farm Toy Show | School District Field House
March 6 - 7 Vintage Shop Hop | Citywide
March 7 Winter Games | Hop Garden
March 14 Casino Night | Creekside Place
April 17 - 19 EHS Musical | High School Performing Arts Center
May 7 Creekside Cruise Night | Creekside Place
May 8 Art Crawl | Downtown Evansville
May 25 Memorial Day Recognition & Rally in the Alley | VFW
June 4 Creekside Cruise Night | Creekside Place
June TBD Strawberry Shortcake Festival | Emma's Table
June 26 Ice Cream Social | Emma's Table
July 3 - 5 A Lake Leota Fourth | Leonard-Leota Park
July 4 5K/10K/1 Mile Fun Run/Walk | Leonard-Leota Park
July 9 Creekside Cruise Night | Creekside Place
August 6 Creekside Cruise Night | Creekside Place
August 7 - 8 Citywide Garage Sales
August 23 History in the Park | Leonard-Leota Park
September TBD CreekFest | Creekside Place
September 3 Creekside Cruise Night | Creekside Place
September 13 Community Corn Roast | Evansville Ford
October TBD Haunted Basement | Hop Garden
October TBD Health & Resource Fair | Creekside Place
October 2 - 3 Vintage Shop Hop | Citywide
October 10 Fall Fest & Monster Mash Market | Downtown Evansville
October 31 Merchant Trick or Treat | Downtown
November 20 - 21 Olde Fashioned Christmas | Downtown Evansville
November 21 Holiday Bazaar | St John's Lutheran Church
November 28 Small Business Saturday | Citywide
December 6 Ecumenical Holiday Choir Concert | United Methodist Church

Enjoy a picnic lunch or bring your kayak to the lake in beautiful Leonard-Leota Park. Roam rustic roads and follow a guided map that showcases the unique charm of urban and rural barn quilt folk art.

Settled in 1839, Evansville has "the finest collection of 1840s to 1915 architecture of any small town in Wisconsin," according to the Wisconsin Historical Society. More than 300 residential and commercial properties are listed on the National Register of Historic Places. A free map shows dozens of grand architectural styles in a highly walkable area. The map is part of the free Walker's Guide tour book available at many downtown locations, or by writing to EvansvilleChamber@gmail.com.

Strolling through the neighborhoods, you might occasionally encounter live music concerts on porches, courtesy of Evansville Underground Music. Then amble downtown, where you can enjoy dining and shopping for vintage, antique, repurposed and consigned items.

Historic Leonard-Leota Park is home to a spring-fed lake, popular nine-hole disc golf course, picturesque covered foot bridge and local history museum. During the Fourth of July at the park, fireworks dazzle the sky over the water. Year-round, birdwatchers crow about the avian variety that call the park home. Birdies of another kind are found at the popular 18-hole public golf course at Evansville Golf Club. Nearby, Magnolia Bluff County Park has hiking and equestrian trails with a view for miles, and the Ice Age Trail now takes bikers and hikers through the heart of Evansville.

For more information about how to enjoy the best that Evansville offers, including places to stay, eat and play, please visit:

www.evansvillechamber.org

Contact the Chamber at 608-882-5131 or
EvansvilleChamber@gmail.com.



Magnolia Bluff



Gibbs Lake



JANESVILLE

Wisconsin's Great Outside



Outdoor Fun

Parks, Playgrounds & Outdoor Activities

Janesville is all about savoring the outdoors. Janesville's extensive trail system invites you to hike, bike, bird, fish, snowshoe, or cross-country ski through forests and wetlands alive with native plants and wildlife. With over 60 parks and 30 miles of trails, it's easy to get outside and play. Some favourites are:

Traxler Park – Home to the world-champion Rock Aqua Jays Water Ski Show Team, this riverside park is a summer favorite.

Palmer Park – Features CAMDEN Playground, one of the region's largest accessible play areas, plus the Palmer Urban Mountain Bike Park for adventure seekers.

Rockport Park – The city's largest at 246 acres, featuring Peace Park Playground and Pavilion and plenty of open space for hiking and exploration.

Riverside Park – Offers pickleball, disc golf, shuffleboard, kayaking, and access to the Rock River. It's also home to a splash pad, golf course, and the scenic Devil's Staircase trail, part of Wisconsin's famed Ice Age Trail.

Public Art Trail

Art meets the outdoors along Janesville's growing Public Art Trail. Wander through downtown and discover over 60 pieces of outdoor art including large-scale murals, sculptures, and installations. The Art Infusion event, held each September, celebrates with a sidewalk chalk competition and new mural installations that brighten the city year-round.

Rotary Botanical Gardens

This garden features spaces such as Japanese and English Cottage gardens, as well as a whimsical children's garden. May through September, the Garden Art Exhibit showcases handcrafted wooden pieces decorated by local artists. Each winter, the Gardens transform into a dazzling wonderland for the Holiday Light Show.

Come Inside

Dining

Savor the local flavor in Janesville's growing dining scene. From riverside patios to cozy supper clubs and a craft brewery, the city's chefs and makers serve up fresh, creative fare. Pair your meal with a locally brewed beer or Wisconsin wine for a true taste of Janesville.

Shopping

Janesville offers charming boutiques, vintage finds, and specialty shops where you can browse, unwind, and take home a little piece of the city. Many shops are locally owned, making downtown a hub for one-of-a-kind gifts and personal service.

Things to Do

When it's time for indoor activities, Janesville delivers plenty of ways to be entertained.

Janesville Performing Arts Center (JPAC) – A beautifully restored 633-seat theatre hosting national, regional, and local performances in a historic setting.

Comedy Cabin – Laugh the night away at Janesville's stand-up comedy hotspot.

Rock County Historical Society & Lincoln-Tallman Museum – Step into history with interactive exhibits, historic tours, and special programming at this National Register landmark.

Papa Docs Axe Throwing – Try something new with friends at Janesville's axe throwing venue.

Janesville Jets Hockey – Catch edge-of-your-seat action as this Junior A hockey team hits the ice for thrilling home games.

For more information visit: janesvillecvb.com or call (800) 487-2757

Photo credits to Kim Hoholek and Full Spectrum Photography

Welcome to Milton

Discover Milton's rich history, hike and bike along our trails, and boat or fish on our beautiful lakes. Sample a new wine, dine at a local supper club or old-fashioned pub, shop our charming boutiques, or join us for one of our fun community events. Steeped in history and with unique opportunities for visitors, Milton is a friendly, engaging, and delightful small town. Find fascinating historic attractions, natural beauty, inviting shops and restaurants, all nestled in scenic southern Wisconsin.



Sip

Milton is home to three unique wineries and a brew pub:

- Rubbery Ducky Winery & Country Market
- Timber Hill Winery
- Fermenting Cellars Winery
- Good Works Brewing



Shop

Milton has two distinct downtowns that offer plenty of exceptional shopping and dining.



Dine

Find everything from Wisconsin supper clubs to unique cafes in Milton.



Signature Events

Spring & Summer

- Civil War Living History Days (May)
- Concerts at the Gathering Green
- 4th of July Festival
- Pork Roast & Makers Market (August)

Fall

- Twilight Tours of the Milton House Museum (October)
- Junction Function (October)
- Pumpkin Fest (October)

Holidays

- Merry Milton Week
- Performance: A Christmas Carol, Milton House Museum

Photo credits to Kim Hoholek and Full Spectrum Photography



Outdoor Fun

Scenic Trails

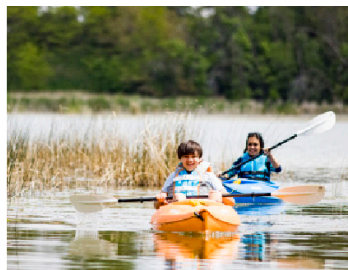
- Glacial River Trail
- National Scenic Ice Age Trail
- Rock River Trail

Boating, Fishing & Swimming

- Clear Lake
- Lake Koshkonong
- Storrs Lake

Parks, Playgrounds & Splashpad

- Crossridge Park
- Goodrich Square Splash Pad
- King Park Disc Golf Course & Sledding Hill
- Schilberg Park
- Tails n Trails Dog Park



Explore Our Unique History

Tour the **National Historic Landmark Milton House Museum**, an 1844 stagecoach inn and authenticated stop on the Underground Railroad.

Take a self-guided walk through the **Milton College Historic District**, where former college buildings constructed in the mid-1800s have taken on new life.

Attend the **Civil War Living History Days** held annually in May to explore the soldiers' encampment and Underground Railroad, meet Abraham Lincoln, view cannon demonstrations, and more.

Rock County Accommodations

Legend: P - Pool, B - Breakfast Included, R - Restaurant

CAMPGROUNDS

Blackhawk Campground ~ 3407 E Blackhawk Dr, Milton
~ 608-868-2586

Creekview Campground ~ 748 Albion Rd, Edgerton
~ 608-921-8354

Hickory Hills ~ 856 Hillside, Edgerton ~ 608-884-6327

**Milton KOA Family Campground ~ 872 E Hwy 59, Milton ~
608-868-4141 ~ HiddenValleyMilton.com (P)**

Lakeland RV Camping Resort ~ 2803 Hwy 59, Milton ~
608-868-4700 (P)

Lakeview Campground ~ 1901 Hwy 59, Milton ~ 608-868-7800

BELOIT: HOTEL / MOTEL

AmericInn by Wyndham ~ 2790 Milwaukee Rd ~ 608-365-6000 (PB)

The Beloit Haus ~ 1520 Emerson St ~ 608-481-1589

Baymont Inn & Suites ~ 2900 Ford St ~ 608-365-8680 (B)

Del-Mae Motel ~ 1850 S Madison Rd ~ 608-362-8888

Driftwood Motel ~ 1826 Riverside Dr ~ 608-364-4081

Fairfield Inn & Suites ~ 2784 Milwaukee Rd ~ 608-365-2200 (PB)

Hampton Inn ~ 2700 Cranston Rd ~ 608-362-6000 (PB)

Hilton Home2Suites ~ 2750 Cranston Rd ~ 608-467-5500 (PB)

Holiday Inn Express ~ 3022 Ford St ~ 608-519-4040 (PB)

Hotel Goodwin ~ 500 Public Ave ~ 608-473-1400 (R)

Ironworks Hotel ~ 500 Pleasant St ~ 608-362-5500 (BR)

Quality Inn ~ 2786 Milwaukee Rd ~ 608-362-2666 (PB)

BED & BREAKFASTS AND INNS

Cooksville Farmhouse Inn ~ 11203 N State Rd 138,
Cooksville ~ 608-335-8375 (B)

1810 Emerson House ~ 1810 Emerson St, Beloit ~
608-368-8445 (B)

Guardian Angel B&B ~ 429 Prospect Ave, Janesville ~
608-758-3211 (B)

Prairie Hill Retreat ~ 5130 E US Hwy 14, Janesville ~
608-756-9850

JANESVILLE: HOTEL / MOTEL

AmericInn ~ 3900 Milton Ave ~ 608-371-9981 (PB)

Baymont Inn ~ 616 Midland Rd ~ 608-758-4545 (PB)

Cobblestone Hotel & Suites ~ 20 W Milwaukee St ~
608-757-2200 (PB)

Hampton Inn ~ 2400 Fulton St ~ 608-754-4900 (PB)

Holiday Inn Express & Conference Center ~
3100 Wellington Place ~ 608-756-3100 (PB)

Lannon Stone Motel ~ 1524 E Racine St ~ 608-752-7441

Microtel Inn ~ 3121 Wellington Place ~
608-752-3121 (B)

Motel 6 ~ 3907 Milton Ave ~ 608-756-1742

Northern Town Motel ~ 1409 Center Ave ~
608-754-0251

Quality Inn ~ 3520 Milton Ave ~ 608-754-0251 (B)

Redwood Motel ~ 3912 N Hackbarth Rd ~ 608-756-4500

Super 8 ~ 3430 Milton Ave ~ 608-756-2040

Towneplace Suites by Marriott ~ 2706 Pontiac Place ~
608-898-4200 (PB)

Tru by Hilton ~ 2702 Pontiac Place ~ 608-302-3838 (PB)

EVANSVILLE: HOTEL, RETREAT CENTER

Evansville Inn & Suites by OYO ~ 715 Brown School Rd
~ 608-882-0936 (B)

The Grove Guesthouse ~ 8 S Madison St ~ 608-290-3433

The Grove Retreat (groups) ~ 5 N Water St ~
608-412-0908 (PB)

Allen Creek Apartment via Airbnb ~ 137 E Main St ~
608-882-1248

EDGERTON AREA: HOTEL / MOTEL

Coachman's Golf Resort ~ 984 Cty Rd A ~
608-884-8484 (PBR)

Quality Inn ~ I-90 & Hwy 59 ~ 608-884-2118 (PB)

Town Edge Motel ~ 1104 N Main ~ 608-884-9328

*Information is subject to change without notice.



BRICK OVEN PIZZA
WINE BAR & COCKTAILS

FRESH INGREDIENTS
AND INNOVATIVE OFFERINGS



Genisa's Luxury Loft

This 2 bedroom, 2 bathroom
loft is located right above
Genisa Pizza & Wine Bar.

Located in the heart of
downtown Janesville, with
access to a variety of
shopping & dining, this loft is
filled with modern luxuries.
All appliances are from Sub-
Zero, Wolf, and Cove,
including a 24-bottle wine
chiller. Available for short &
long term rentals.

11 N Main St Janesville, WI
(608) 728 - 7964

genisawinebar.com/luxury-loft/

DOWNTOWN JANESVILLE
GENISAWINEBAR.COM





WOODMAN'S **SPORTS & CONVENTION CENTER**

Experience Janesville's premier destination for sports, events, and community.

The Woodman's Sports & Convention Center is home to elite athletic programs — including the **Janesville Jets** and the **Beloit Buccaneers Men's & Women's Hockey Teams** — and delivers unforgettable experiences for guests of every age. From youth and adult hockey, Learn to Skate, and public sessions to field trips, birthday parties, tournaments, conferences, private events, and court sports, WSCC brings it all together under one roof. Whether you're hosting a celebration or exploring ice and court programs for the whole family, our versatile spaces and dedicated team ensure every visit is exceptional.

Youth Hockey • Youth Skating • Adult Hockey • Nerf Battle Zone • Tournaments
 Public Skate • Field Trips • Birthday Parties • Private Events • Court Sports



📞 608-373-6083



woodmanscenter.com



info@woodmanscenter.com